



Dignity
Independence
Quality of life
Freedom Partnership

the extra mile

Spring 2006

Two decades of giving the gift of mobility!

What would we do without Ride Connection? Since its inception, Executive Director Elaine Wells has watched community organizations collaborate to provide coordinated transportation service. It is one of the strong highlights of Ride Connection's first 20 years of service.

As we continue to grow, our challenge is always to meet the need. The need for accessible transportation increases dramatically each year. In the coming years, we must adapt to our changing customer base and continue to work collaboratively to strengthen and broaden our network of support. We are 20 years and growing!



Here are some of the major events in our history:

- 1984 Citizens committee advised TriMet about the need for coordinated transportation to increase service
- 1986 TriMet began a special transportation project. There were six providers who provided just under 12,000 rides that first year of service
- 1988 Volunteer Transportation Inc. (VTI) was incorporated as a private non-profit organization
- 1989 VTI started coordinating funding applications for providers
- 1999 VTI changed its name to Ride Connection
- 1999 Oregon legislature increased funding for Elderly and Disabled Transportation
- 2000 Rural Washington county General Public & Job Access services began
- 2000 Ride Connection hosted its 1st Safe Driver event
- 2001 King City and Gateway shuttles began
- 2001 In December, Worklink Travel Training began
- 2003 In January, rides began in Clark County, Washington
- 2004 In May, centralized rider screening established for community based programs
- 2004 In May, RideAbout began service
- 2004 In November, the RideWise travel training program began accepting referrals
- 2006 Our fleet of vehicles has grown to 86
- 2006 Service is exceeding 300,000 trips per year

This publication is available in alternate formats upon request
Contact Bryan @ 503.528.1721

Help share the vision... Give the gift of mobility.

Our riders tell us that being a part of their community is important. Help keep our network of transportation alive and thriving! Ride Connection and its community providers offer transportation that people rely on and value. Please make a contribution to Ride Connection. We appreciate your donation very much and we need your assistance. You can use the enclosed contribution envelope, or donate online at www.rideconnection.org.

Clark County U-Ride: Working Together

Human Services Council, Catholic Community Services, RSVP, the American Cancer Society and The Arc of Clark County in partnership with Ride Connection offer transportation for people in Clark County. Clark County U-Ride hopes to increase the number of medical rides in this first year of expansion. Clark County U-Ride is pleased to announce the establishment of a satellite office, generously provided by The Arc of Clark County.



Clark County U-Ride's office is located at:
6511 NE 18th St, Vancouver, Washington.

We look forward to increased services and many new supporters.

We are pleased to announce our new **Mission & Vision** statements.

Ride Connection Mission

To link accessible, responsive transportation with community needs.

Ride Connection Vision

To create independence and community connections through the gift of mobility.

East County U-Ride

Ride Connection is pleased to announce Leslie Garth as the Transportation Coordinator for East County U-Ride. Leslie is a native of Oregon and grew up in North Portland. She joins Ride Connection with eight years of experience working in the non-profit sector. She manages one full-time and one part-time driver along with several volunteers. Leslie is quickly learning the “language of transportation.”



Fran Walsh & Leslie Garth pose in front of a U-Ride vehicle

While Leslie continues to coordinate drivers and schedule rides, she is also out making important connections in the rural communities of East County. She is presenting to area businesses and agencies, making them aware of the volunteer opportunities and the service available to them. One long standing supporter and advocate of the transportation program, Legacy Mount Hood Medical Center, has supported East County U-Ride with a generous donation of \$2500.00. Fran Walsh, Development and Community Relations Coordinator for Mount Hood Relations recently stated,

“this service reaches into the many pockets of our service area and connects with seniors, the disabled, and many others who would otherwise be isolated from our community and helps them either retain or regain some semblance of independence, by allowing them to get out of their homes and go grocery shopping, attend doctor appointments, visit with family - all of which is good for their health and well-being in the long run. For these reasons Legacy Mt Hood Medical Center supports this transportation service”.

East County U-Ride is looking for new members for its Advisory Committee that meets at the East County Office. Individuals from East Multnomah County area businesses, non profit agencies, faith groups or community groups are welcome to join. If you are interested in joining, please contact Leslie Garth at 503.988.3840 ext 29981 or by email @ lgarth@rideconnection.org.

Please help us save paper - Try a new way to receive our newsletter:
If you would like to receive a copy of our newsletter electronically, please send an email to ride@rideconnection.org with the subject “Subscribe.”

RideAbout Makes Community Connections

As you walk through the doors of Reflections Café and Talking Drum Bookstore, you enter a room filled with the aroma of fresh brewed coffee and delectable pastries. There is a quiet buzz of conversation coming from one of the many tables. Many of the café's customers are from the neighborhood and others are just passing through. No matter where you are coming from or where you are going the community connection is alive.

Gloria McMurtry opened Reflections café about 10 years ago along with two other business partners. At that time, Gloria stated, "the neighborhood was a whole different area; there were not many retail stores around." So when the "opportunity knocked" for Gloria to be a part of this new venture she gladly accepted. She has been able to meet the demands of her changing clientele and now offers a small and delicious lunch menu as well as many community events.



Starting in February 2006, on the second and fourth Thursday of each month, Reflections and the Talking Drum Bookstore hosts dramatic readings, for seniors from Passin Arts Theater. The series is called "Thanks for the shoulders, a tribute to our elders." Harvey Rice, one of two concierges for the RideAbout shuttle service coordinates these trips. The collaboration started shortly after their first meeting. Harvey contacts

seniors in the area to encourage them to attend the dramatic readings and participate in open discussion after the program.

The RideAbout Shuttle offers a variety of activities throughout the week. Sponsors include African American Chamber of Commerce, Urban League of Portland, American Red Cross, Project Linkage, Safeway, Fred Meyer, TriMet and Ride Connection. For questions regarding the RideAbout shuttle program or calendar of events please contact 503.226.0700.

Stop by the Reflections Café and Talking Drum Bookstore at 446 NE Killingsworth in Portland and listen to the buzz of conversation along with the community connection Gloria started with a simple cup of coffee.

"We connect people with where they need to go"

Travel Training – What Chris thinks you ought to know...

It's important to know that using the buses or MAX trains does not preclude you from using other modes of transportation. Learning how to use other modes of transportation is a positive thing...it takes nothing from you, but may be the key to true independence. For many, the use of public transportation is the difference between isolation and independence.



For you to get the most out of travel training, you need to have a couple of destinations in mind. The destinations are of your choosing, so be sure to choose places that you'll visit frequently. If you pick a place that you rarely visit, then what you've learned may be forgotten by the time you take the same trip again. Travel Training doesn't have to be "all business"...people are encouraged to pick at least one destination for fun.

All training is provided free of charge and done when it's most convenient for you. We can provide training to just about any destination whether you're going to work, shopping or medical appointments. What does that really mean? It means that we work when you work, we shop when you shop, and we go to the doctor when you go the doctor.

Sound like fun? Call **503-528-1743** today! Enrolling in the program is simple. Give us a call and tell us your transportation needs.

New Partners

Many thanks to our new and existing community partners for assisting individuals to become more independent and self sufficient by providing access to information, training and support. Since January 2006: *Oregon City High School, Portland Public Schools, Tigard Vocational Rehabilitation, Lake Oswego School District, Inclusion, Inc., Multnomah Educational Service District, and Reynolds Youth Transition Program.*

If you are interested in getting involved with RideWise, would like to refer an individual for travel training or would like a presentation about the services available, contact James Uyeda at 503-528-1748 or juyeda@rideconnection.org.

RideWise is a collaborative effort between TriMet and Ride Connection to promote independent travel of seniors and people with disabilities by providing access to information, training and support.



"We connect people with where they need to go"

Heart of Transportation



*Susan Tingley presenting a
"Heart of Transportation"
award to Verna Braeme*

Ride Connection's "Heart of Transportation" Safe Mobility and Volunteer Recognition Event was held February 21, 2006 at East Portland Community Center. The event honored drivers, concierges, and other volunteers from our network of providers. The event was a small token of the thanks and esteem that Ride Connection has for each and every one who gives the gift of mobility in our communities.

Congratulations to this year's "Heart of Transportation" award winners:

Eileen Hilgren

Canby Adult Center

Marty Butler & Vern Stark

Catholic Community Services

Fraser Rasmussen

Northwest Pilot Project

Mike Bascuti, Howard Rasmussen, & Mimi Smith

Northwest Portland Ministries

Mardell Baessler, Verna Braeme, Bill & Linn Hiett, & Bill Staples

Transportation Reaching People

Pam Heman

Ride Connection

Bobbie Nunn

Ride Connection Board of Directors

Harvey Rice

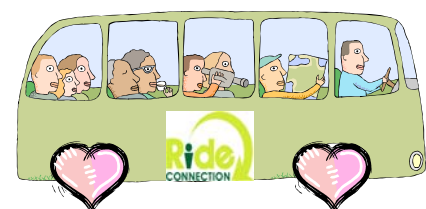
Urban League



*Award recipient
Fraser Rasmussen*

Donations generously provided by:

- ⇒ Disability Art and Culture Project (DACP) www.dacphome.org
- ⇒ Heffernan Insurance Brokers www.heffgroup.com
- ⇒ Peet's Coffee & Tea 508 SW Broadway Portland, OR 97205 www.peets.com
- ⇒ Resource Revival PO Box 440 Mosier, OR 97040
www.resourcerevival.com
- ⇒ Joan Heinemann, Ride Connection
- ⇒ Susan and Emma Tingley, Ride Connection
- ⇒ Julie Wilcke, Ride Connection



"We connect people with where they need to go"

Changing Lanes

Ride Connection is pleased to announce three new members to its Board of Directors:

- ⇒ **Hank Miggins** brings skills in group interaction, internal auditing, budgeting and political knowledge of state and local government.
- ⇒ **Grady Tarbutton** represents Multnomah County on our Board. Grady brings skills about how to provide service to our elders and people living with disabilities.
- ⇒ **Andy Szolnoki** was actively involved in Ride Connection's Quality Improvement Committee, former provider of Providence ElderPlace, and his service experience will serve our Board well.

Our Current Board Members

- Patty Brost
- Leslie Clark
- Patrice Goodman
- Lynn Jolley
- Dick Jones
- Julie Kennedy
- Ken Nitta
- Bobbie Nunn
- Carolyn Rundorff
- Ron Thompson
- Bob Ueland
- Rosy Vu

Ride Connection Staff update

We continue to grow, and as we grow, we're fortunate to have talented people join us. Welcome to these new Ride Connection staff members!

- ⇒ Leslie Garth, East County U-Ride Transportation Coordinator
- ⇒ Mike Garvey, Administrative Assistant
- ⇒ Bryan Kauffman, Administrative Assistant
- ⇒ Patty McNally, Volunteer Recruiter/Outreach Specialist
- ⇒ Cora Potter, Service Center Supervisor
- ⇒ Heather Roberts, Fiscal Assistant
- ⇒ Heidi Svec, Service Representative
- ⇒ James Uyeda, RideWise Outreach Coordinator



3220 N Williams Ave
Portland, OR 97227
503.528.1720
Fax 503.493.7431

NON-PROFIT ORG.
U.S. POSTAGE
PAID
PORTLAND, OR
PERMIT 495

Return Service Requested

To link accessible, responsive transportation with community needs

Donate Your Vehicle to Us

Donated vehicles help raise funds for Ride Connection and Volunteers of America, and you can get a great charitable deduction. The towing is free; the convenience is unbelievable; and we do all the work. If you have a vehicle taking up unnecessary space, call Carlee at 503.528.1722 or by email at clindsay@rideconnection.org. We'll take care of the rest!